



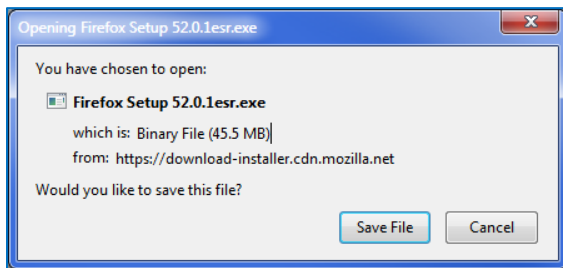
Firefox 52 has eliminated NPAPI plug-in support which runs Java applets. To continue to use the Java program, follow the steps below:

I. Install & Configure Firefox Version ESR:

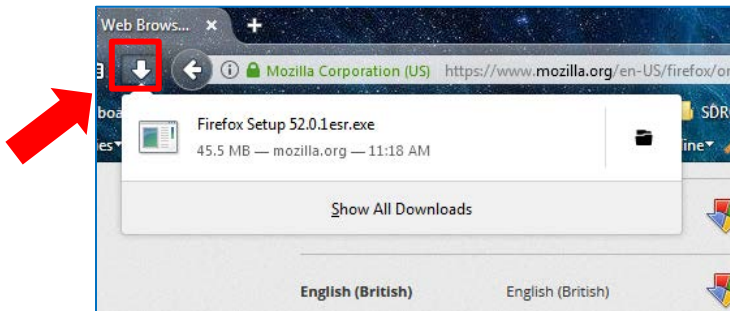
- 1) Download the correct [Firefox Extended Support \(ESR\)](#) release in your language and use the **32-bit version**:

Language	Windows	Windows 64-bit	macOS	Linux	Linux 64-bit
English (US)	English (US)				

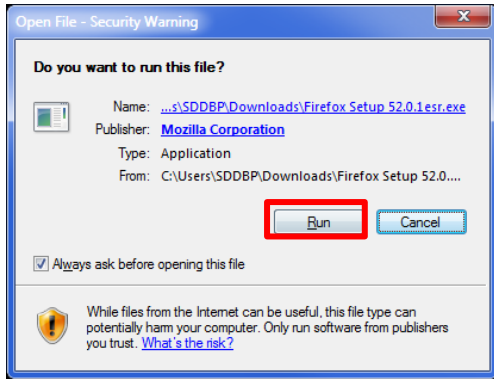
- 2) **Save** the File:



- 3) Retrieve it from the **Downloads** folder and double-click to execute it:



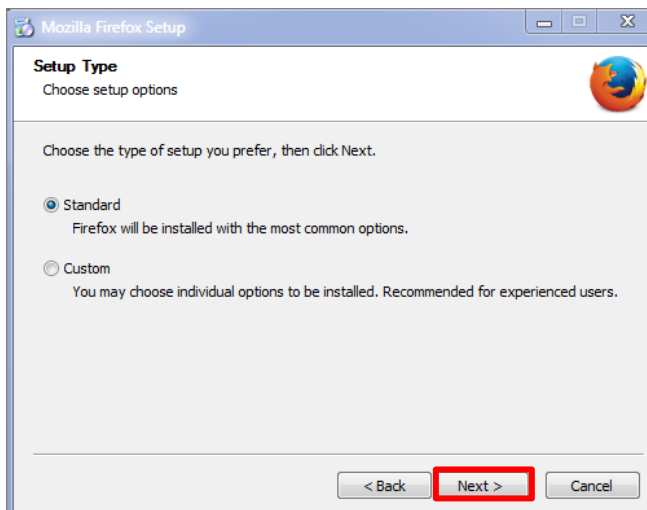
4) Click the **Run** button:



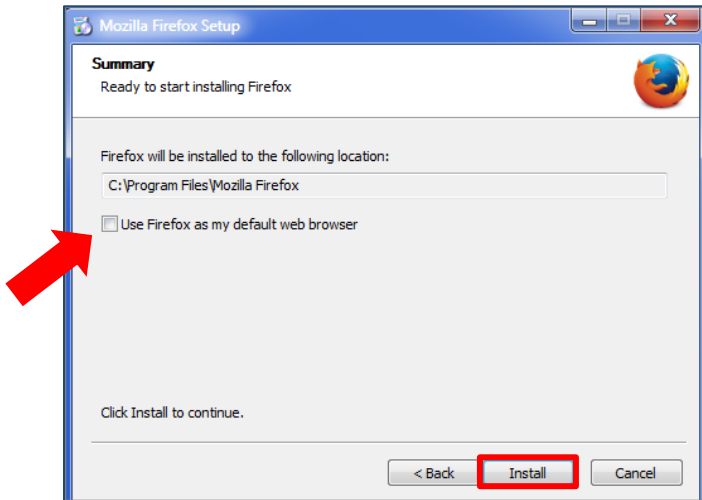
5) Click **Next**:



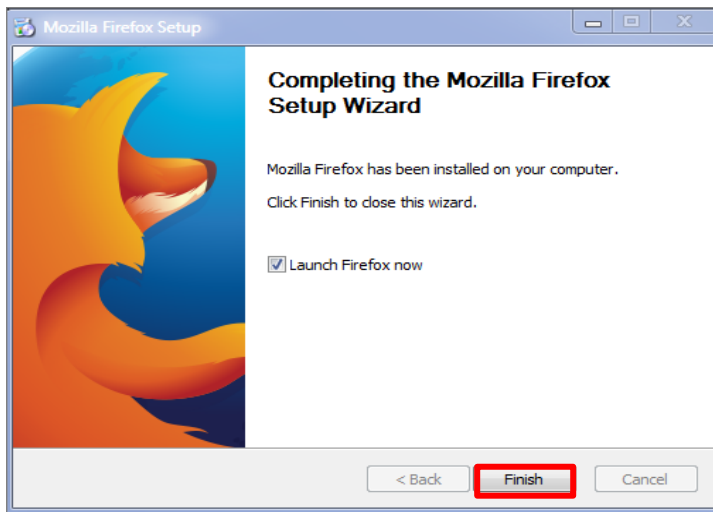
6) Click **Next**:



7) Select or Deselect Firefox Default web browser, Click **Install**:



8) Click **Finish**:



9) Set the Firefox [Pop-Up Blocker](#) to Off.

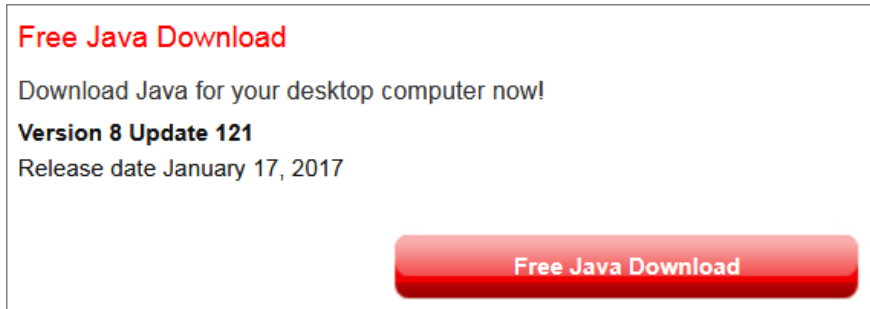
10) Set the Firefox Java Plug-In to **"Always Activate:"**

- Click on the Firefox menu in the top right corner of the screen.
- Choose **Add-ons**.
- Click the **Plugins** tab.
- Click on the Plugin **"Java Platform ..."**
- Select **"Always Activate"**

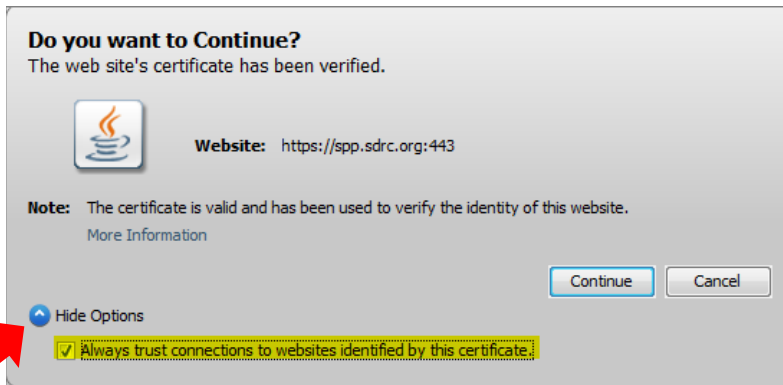


II. Install & Configure latest Java Program:

- 1) Install the [latest version of Java](#)

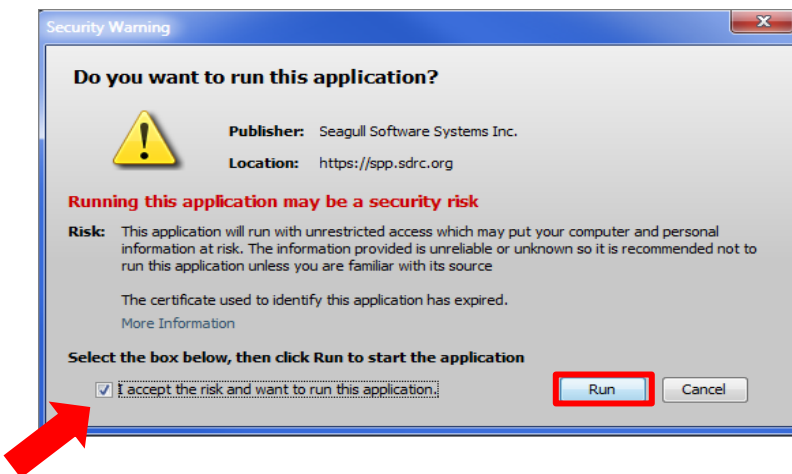


- 2) Message displays, **Do You Want To Continue?**



- a. Expand **"Show Options"**
- b. Check **"Always Trust"**
- c. Click **Continue**

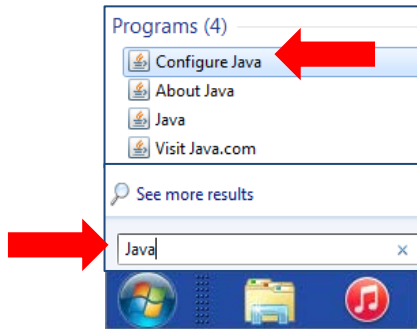
- 3) Check **"I accept"** and click on **Run** button:



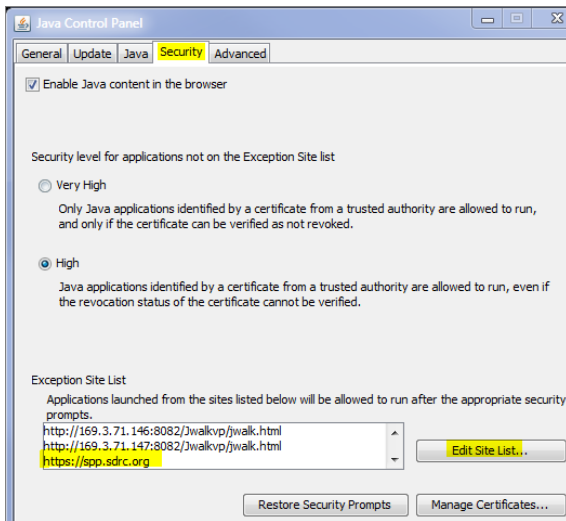
- 4) **Uninstall** [older versions](#) of Java. You can use the [Java Uninstall tool](#).

5) Configure the Java Program settings:

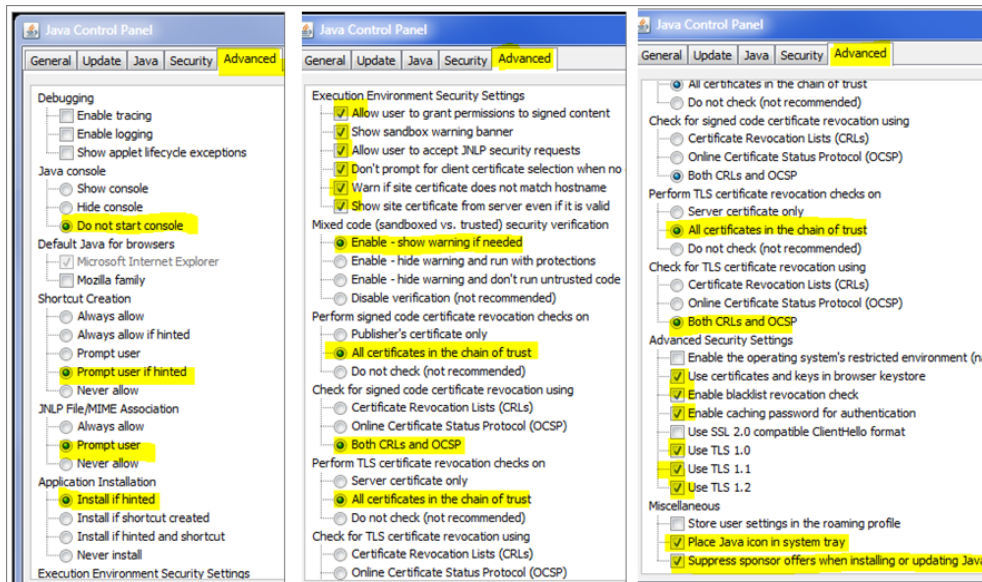
- a. Type “Java” into the Search Programs box and click on **Configure Java**:



- b. Click on the **Security** tab and add the SPP web address in [Exception Site List](#):



- c. Click on the **Advanced** tab and replicate the following settings:

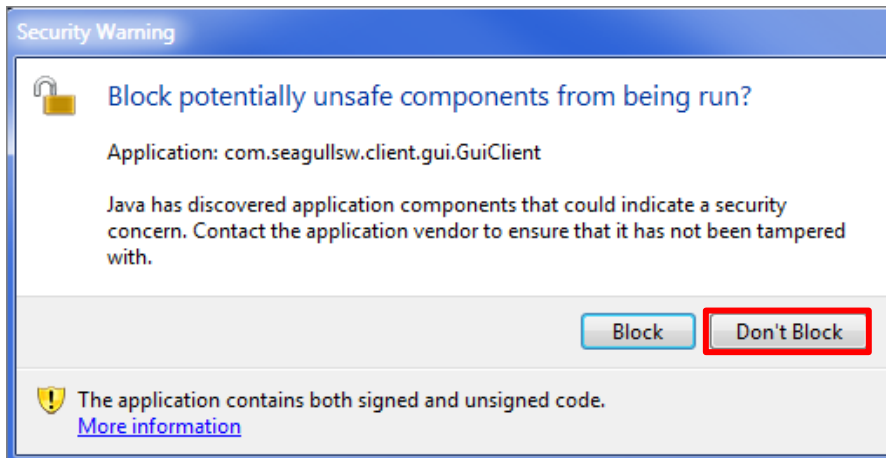


III. Launch Firefox in a new window:

- 1) Navigate to the SPP website.
- 2) Java program will begin to run:



- 3) Message displays, click “Don’t Block”:



- 4) The **Service Provider Portal** login screen displays:



- 5) Create a [Bookmark](#) for easy access to the SPP login screen.